



pretty in plastic!

PUBLIC ART SCULPTURE PROCESS OVERVIEW >

MISSION >



With a newly expanded Public Art Department, we execute the entire process from design, to engineering, fabrication, and all the way through to installation. We focus attention on the artist's vision and our dedication to quality and service.

PROCESS >

Here is an outline of the Fabrication Process from **START > FINISH**. These steps may vary based on the project. We share updates and photos throughout the process and get client approval at every step.

STEP 1: CREATIVE MEETING

We start with a Creative Meeting to finalize the Artist's Vision and share the Fabrication Plan

STEP 2: DESIGN AND ENGINEERING

Municipal Code Requirement Establishment, Site Plan Development, Construction Documentation, CAD Design, Engineering, Digital Renderings, Load and Material Calculations

STEP 3: SCULPTURE

Digital Modeling, Traditional Sculpting, CNC Milling, 3D printing, Mastering and Finishing (sculpt prep for Molding)

STEP 2: FABRICATION

Molding, Fiberglass and Resin Casting, Bronze and Metal Casting, Hand Finishing and Bodywork, Welding and Assembly
Other Services include: Acrylic Fabrication, Laser Cutting, Water Jet, and Vacuum Forming

STEP 3: PAINTING AND FINISHING

Archival Automotive Painting, Faux Finishes, Metal Patina's

STEP 4: CRATING, TRANSPORT, HANDLING, INSTALLATION

Other Services include: Photography, Documentation, and Assembly Instructions, Social Media Promotions, Marketing, and PR

CASE STUDIES >

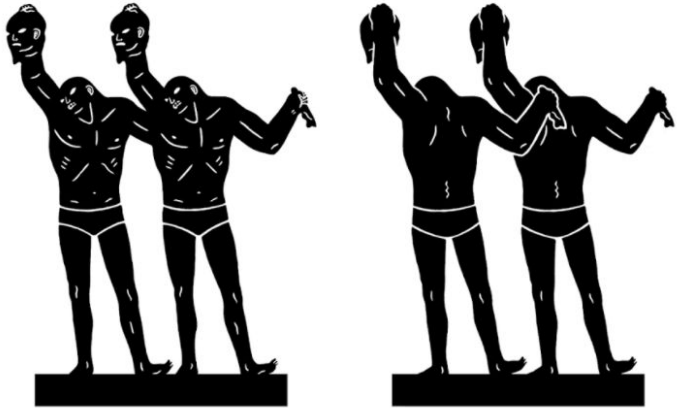
CLEON PETERSON // PAINT THE TOWN // ART BASEL,
MIAMI

LARS SKJELBREIA AND ALEKSANDER STAV //
POLYNATION // OSLO, NORWAY

FRIENDS WITH YOU // WATER PARK PROPOSAL //
TORONTO, CANADA

CLEON PETERSON 'PAINT THE TOWN'

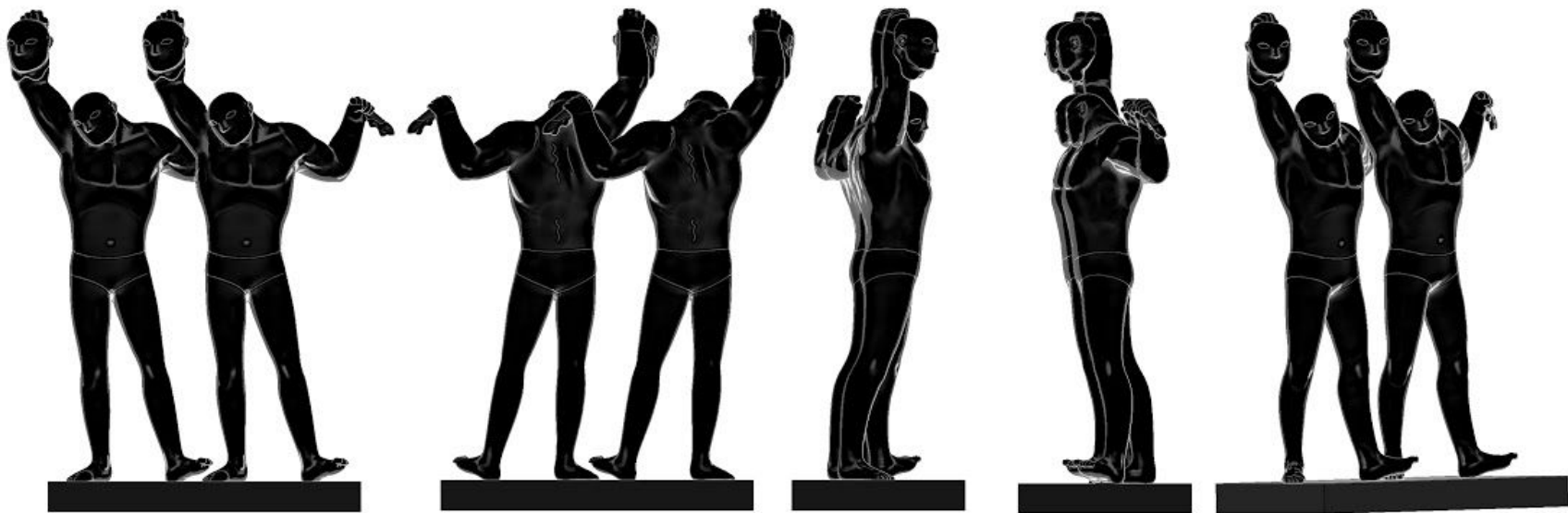
FINE ART SCULPTURE
FIBERGLASS, ARCHIVAL FINISH - 8'
SCOPE, ART BASEL, MIAMI, FL
2014





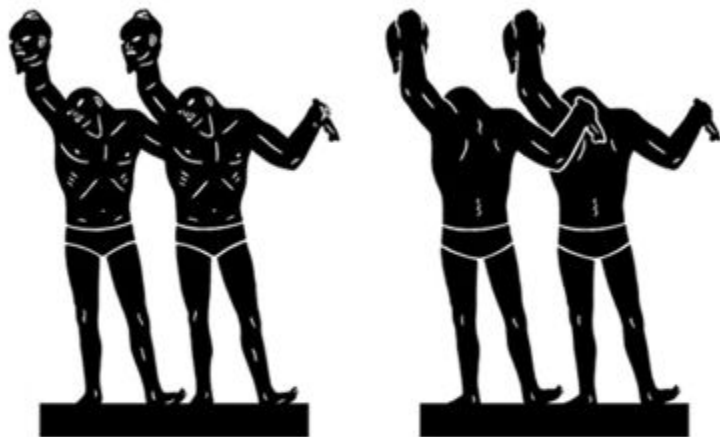
REFERENCE ART FROM THE ARTIST

**Paint the Town
Cleon Peterson**



DIGITAL MODEL

Paint the Town
Cleon Peterson



REFERENCE NEXT TO DIGITAL MODEL

**Paint the Town
Cleon Peterson**



CNC MILLING

**Paint the Town
Cleon Peterson**



CLIENT/ ARTIST INSPECTION AND APPROVAL

**Paint the Town
Cleon Peterson**



BODYWORK AND PREP FOR THE MOLD

**Paint the Town
Cleon Peterson**



MOLDING AND CASTING



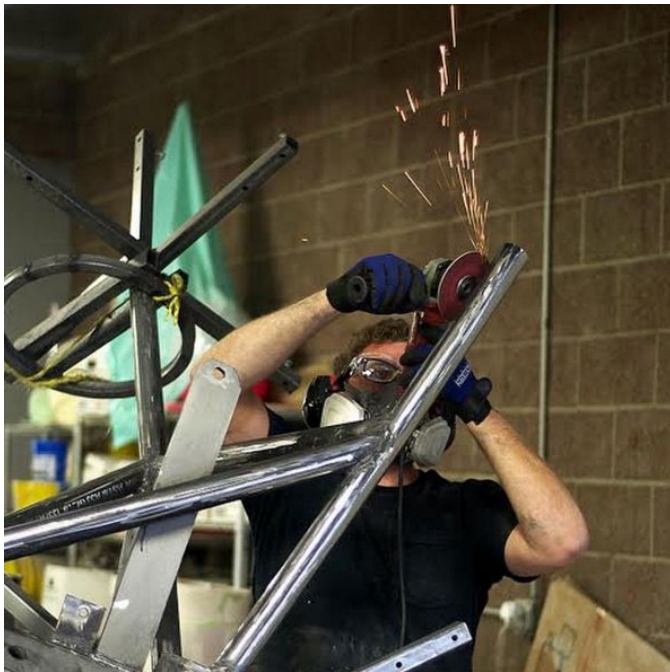
**Paint the Town
Cleon Peterson**



BODYWORK AND CLEANING THE CASTS



**Paint the Town
Cleon Peterson**



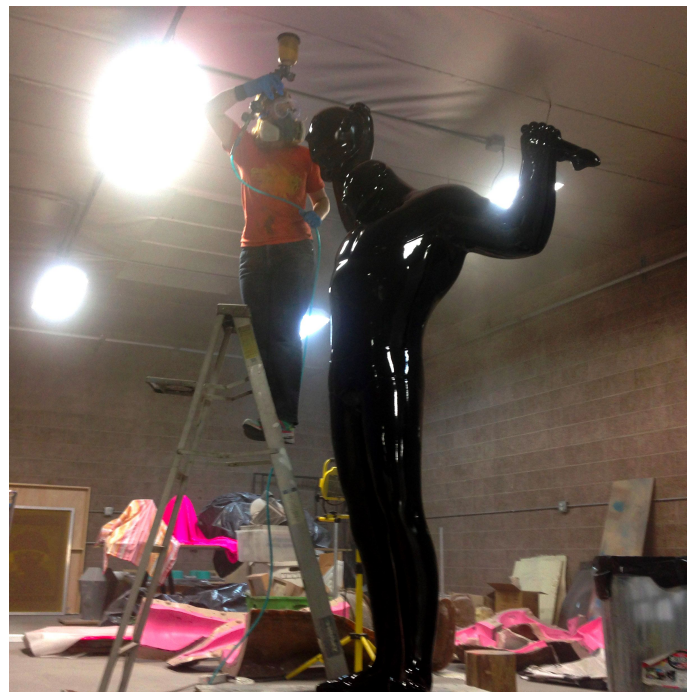
**WELDING THE INTERNAL FRAME
ASSEMBLY**



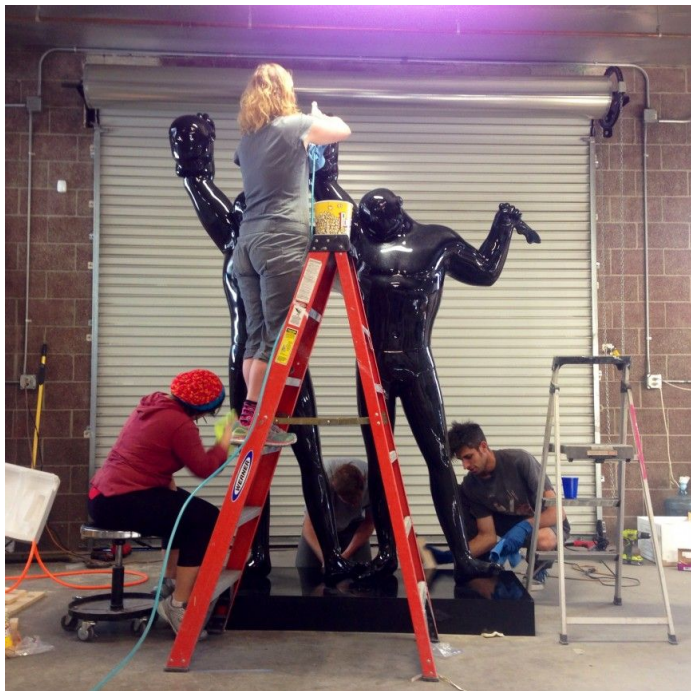
**Paint the Town
Cleon Peterson**



PAINTING
ARCHIVAL AUTOMOTIVE PAINTS



Paint the Town
Cleon Peterson



**INSPECTION
CRATING**



**Paint the Town
Cleon Peterson**



**INSTALLATION
FINISHED PIECE**

**Paint the Town
Cleon Peterson**



**FINISHED PIECE
COLOR VARIATION**



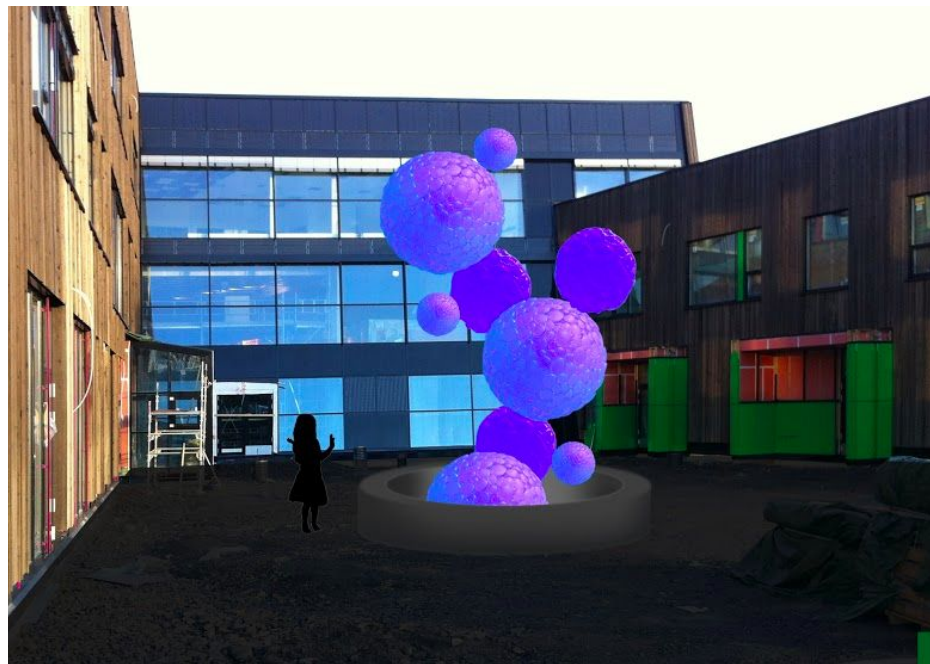
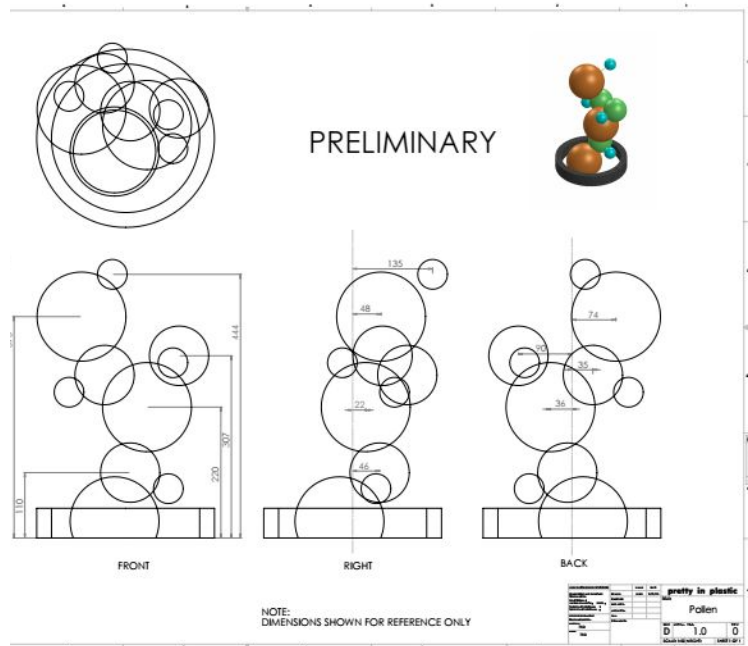
**Paint the Town
Cleon Peterson**

LARS SKJELBREIA & ALEKSANDER STAV

'POLYNATION'

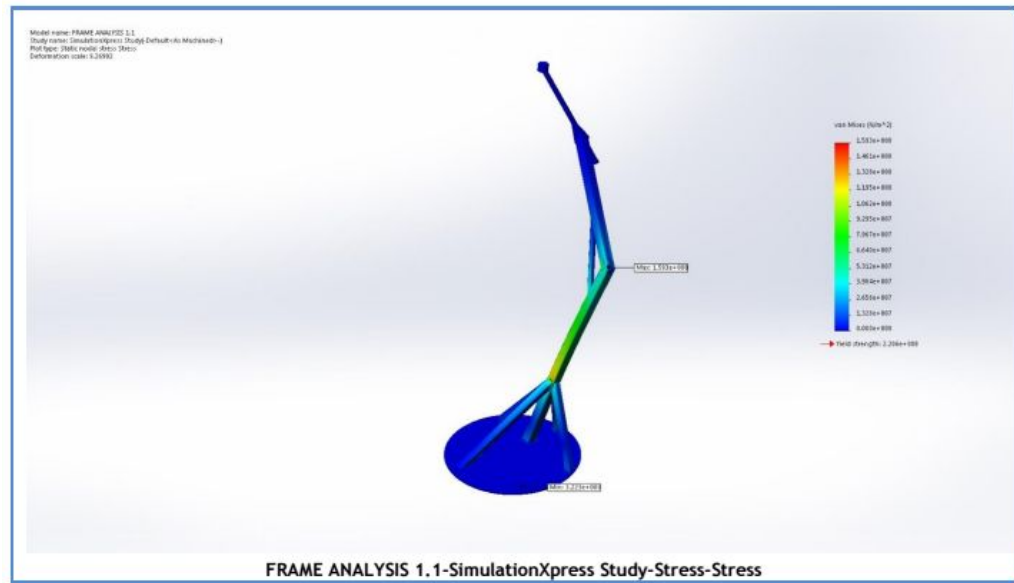
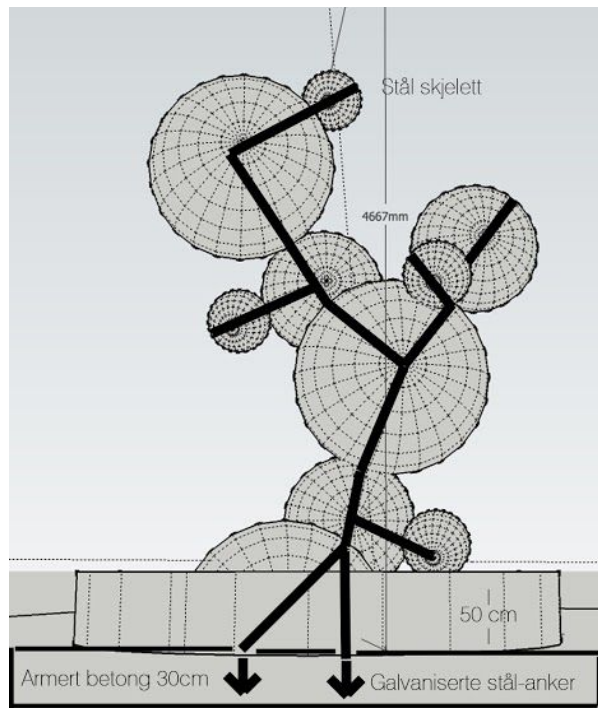
MICROSCOPIC POLLEN
PUBLIC ART INSTALLATION
FIBERGLASS, RESIN, STEEL,
LED LIGHTING - 16'
OSLO, NORWAY
2015





CAD DESIGN
DIGITAL RENDERING

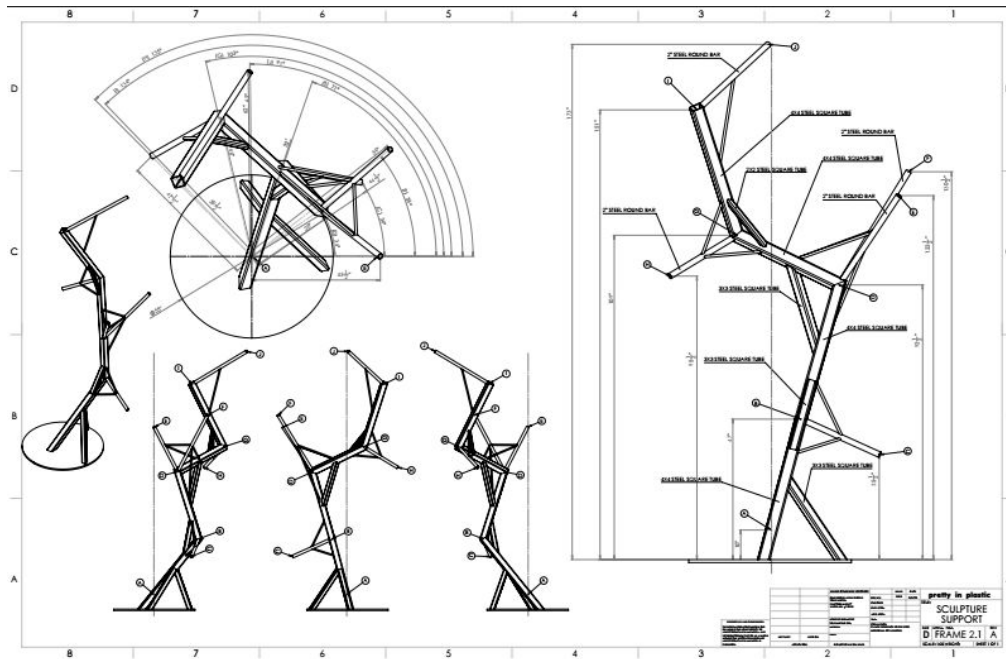
Polynation
Lars Skjelbreia and Aleksander Stav



Name	Type	Min	Max
Displacement	URES: Resultant Displacement	0 mm Node: 21	42.1048 mm Node: 3562

STRUCTURAL LOAD CALCULATIONS FRAME ANALYSIS

Polynation
Lars Skjelbreia and Aleksander Stav



CONSTRUCTION DOCUMENTATION
WELDED FRAME

Polynation
Lars Skjelbreia and Aleksander Stav



**DIGITAL MODEL, 3D PRINTING MATRIX COMPONENTS,
PAINT SWATCHES, ASSEMBLY**

**Polynation
Lars Skjelbreia and Aleksander Stav**



**REFERENCE IMAGE, TRADITIONAL SCULPT,
MOLD, CLEANING THE CAST PIECE**

**Polynation
Lars Skjelbreia and Aleksander Stav**



TRADITIONAL SCULPT

Polynation
Lars Skjelbreia and Aleksander Stav



**MOLD-MAKING, CASTING
CLEANING CAST**



**Polynation
Lars Skjelbreia and Aleksander Stav**



MATERIAL SAMPLES

Polynation
Lars Skjelbreia and Aleksander Stav



SURFACE FINISHES

Polynation
Lars Skjelbreia and Aleksander Stav



**FABRICATION
MATRIX COMPONENTS
ASSEMBLY**

**Polynation
Lars Skjelbreia and Aleksander Stav**



WELDING AND ASSEMBLY

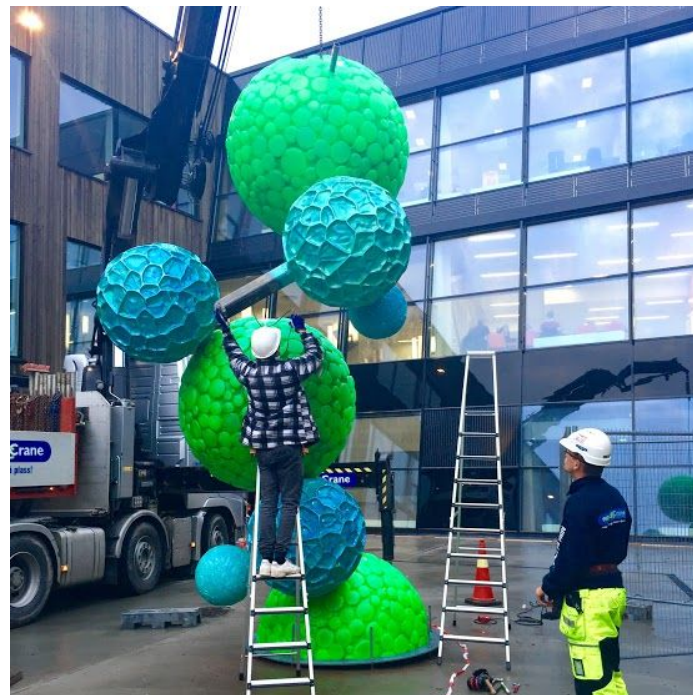
**Polynation
Lars Skjelbreia and Aleksander Stav**



**ASSEMBLY
LIGHTING**



**Polynation
Lars Skjelbreia and Aleksander Stav**



**CRATING AND DELIVERY
INSTALLATION**

**Polynation
Lars Skjelbreia and Aleksander Stav**



**DIGITAL RENDERING NEXT TO FINISHED PIECE
FINAL IMAGES**

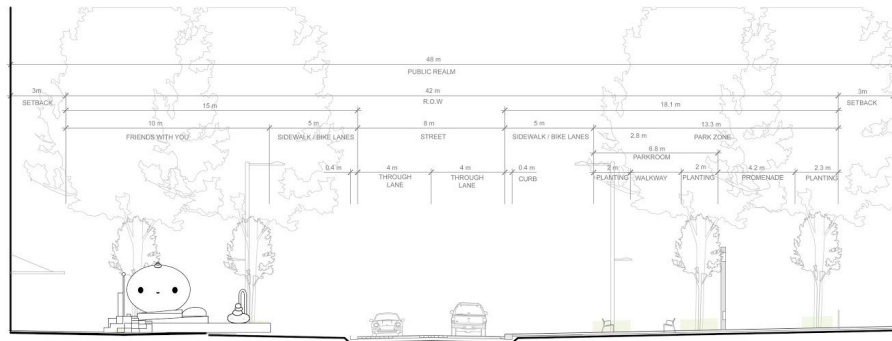


**Polynation
Lars Skjelbreia and Aleksander Stav**

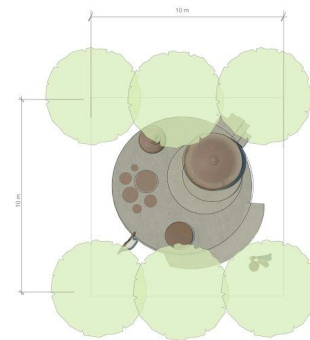
WATER PARK PUBLIC ART INSTALLATION

MATERIALS - DIGITAL SCULPTING & DESIGN

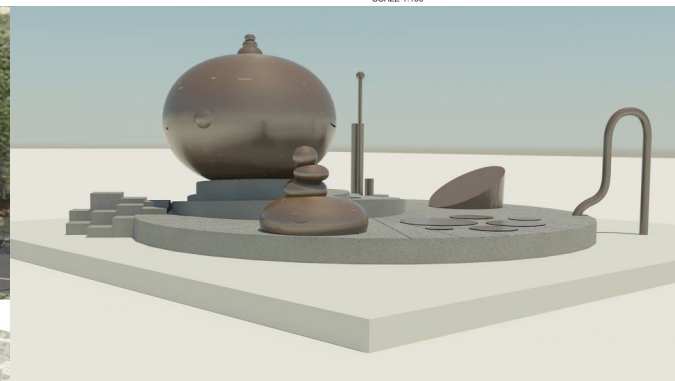
TORONTO, CANADA 2015

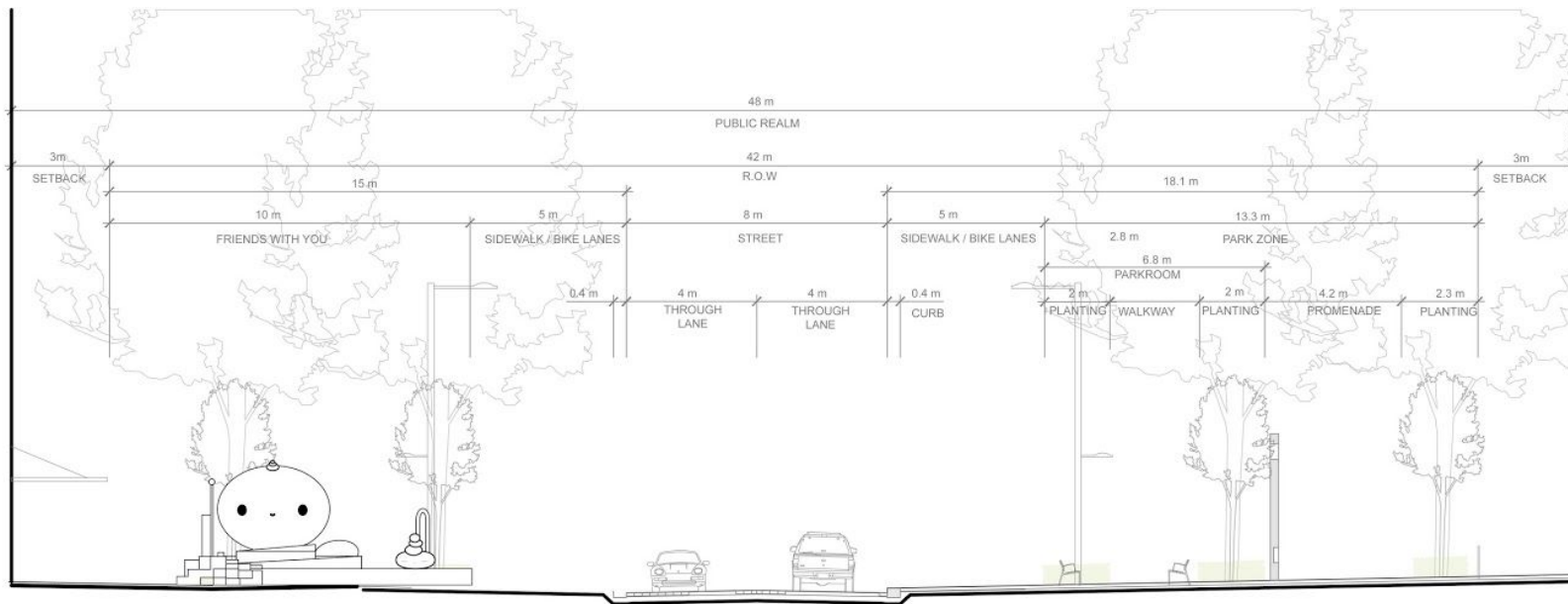


SECTION
SCALE 1:100



PLAN VIEW
SCALE 1:100



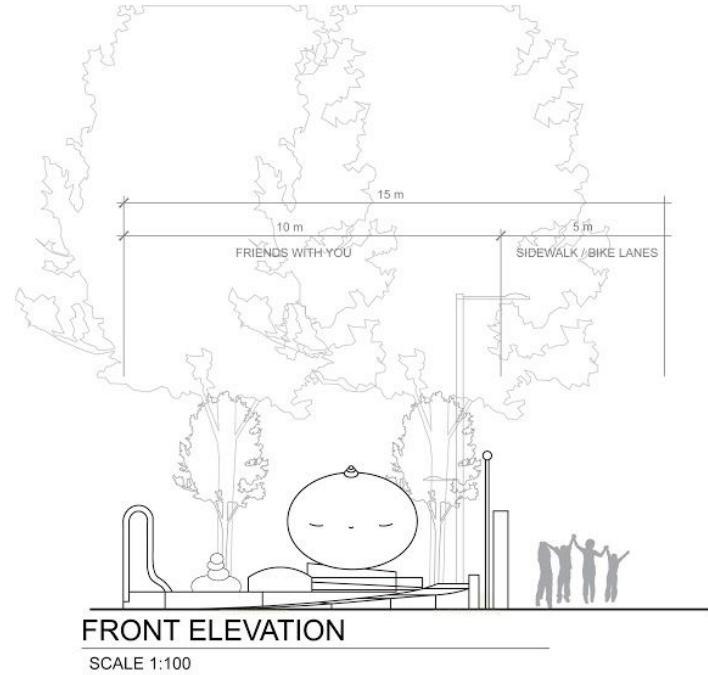
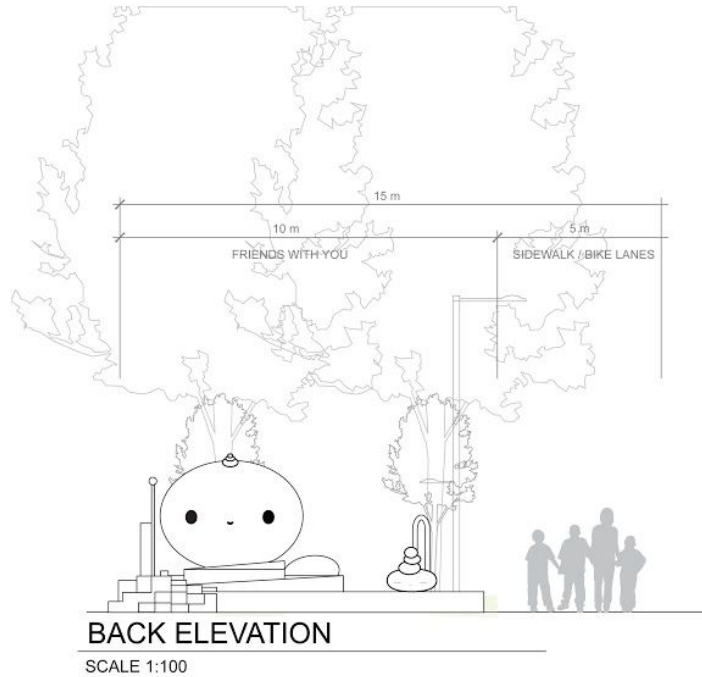


SECTION

SCALE 1:100

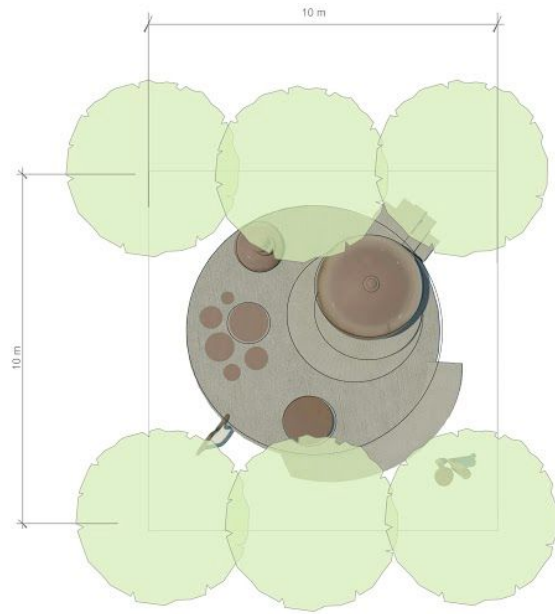
**CONSTRUCTION DOCUMENTATION AND
SITE PLAN SECTION**

**Public Art Installation / Water Park
FriendsWithYou**



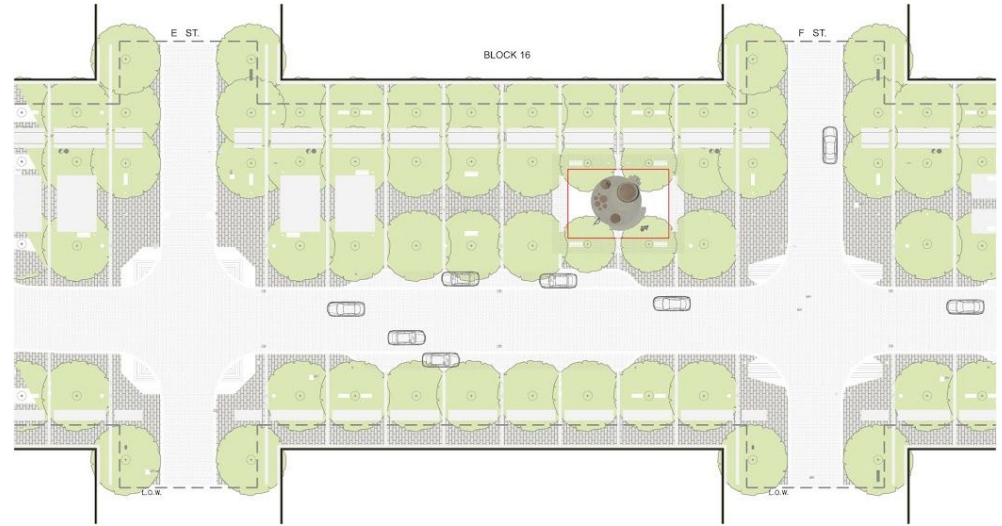
SECTION DETAILS IN CONSTRUCTION DOCUMENTATION

**Public Art Installation / Water Park
FriendsWithYou**



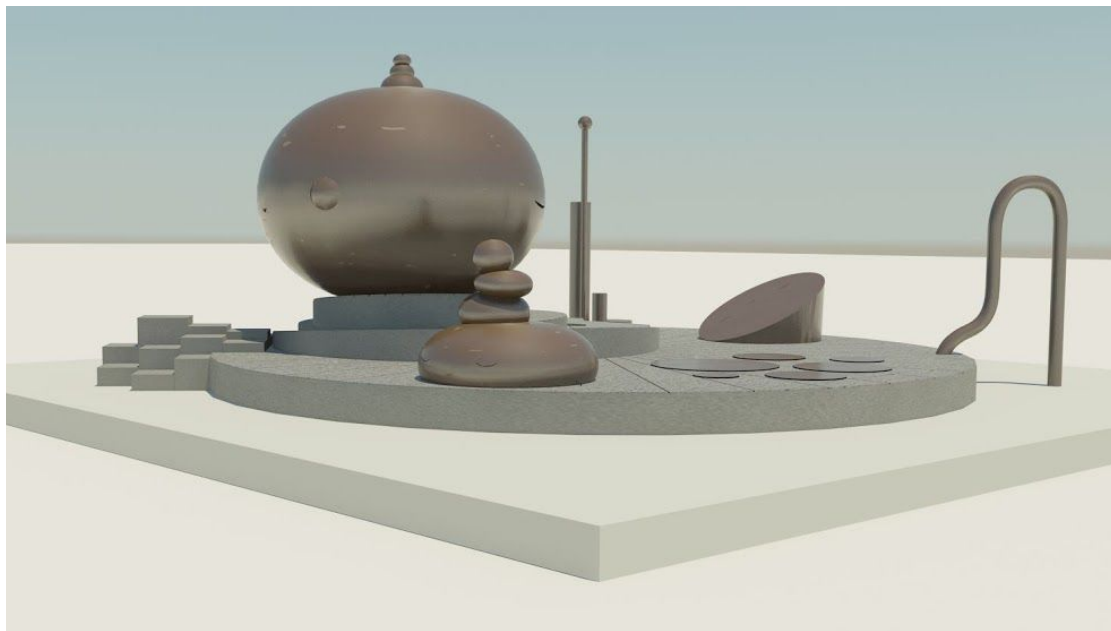
PLAN VIEW

SCALE 1:100

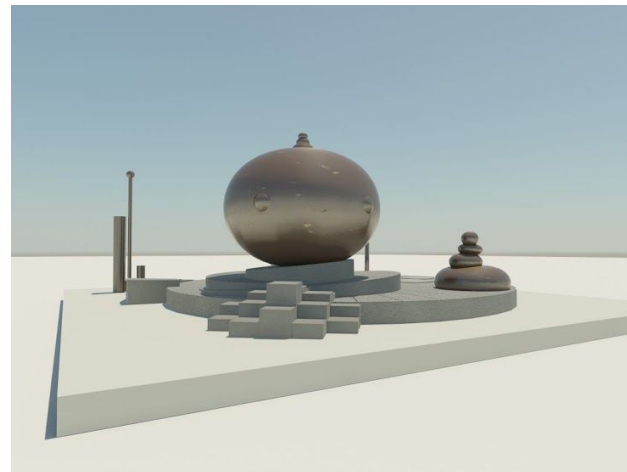


RENDERED SITE PLAN

**Public Art Installation / Water Park
FriendsWithYou**



**RENDERED ISOMETRIC 3D MODEL VIEWS OF
SITE SCULPTURE**



**Public Art Installation / Water Park
FriendsWithYou**



COMPOSITE RENDERING

**Public Art Installation / Water Park
FriendsWithYou**

PARTICIPANT MEDIA & DISNEY // OCEANS!

DESIGN // FABRICATION // INSTALLATION

RESIN, %60 RECYCLED PLASTIC, FABRIC, ARCHIVAL FINISH

NATIONWIDE, LOS ANGELES 2010



CARTOON NETWORK // POWER PUFF GIRLS

DESIGN // FABRICATION // INSTALLATION
CNC MILLED FOAM, HARD COATING, ARCHIVAL FINISH
CARTOON NETWORK STORE, NEW YORK 2016



FX NETWORK // SCULPTURE GARDEN FOR COMIC CON

DESIGN // FABRICATION // INSTALLATION
SILICONE, RESIN, WOOD, ARCHIVAL FINISH - 6'
FX- HIBITION, COMIC CON, SAN DIEGO, CA
2016

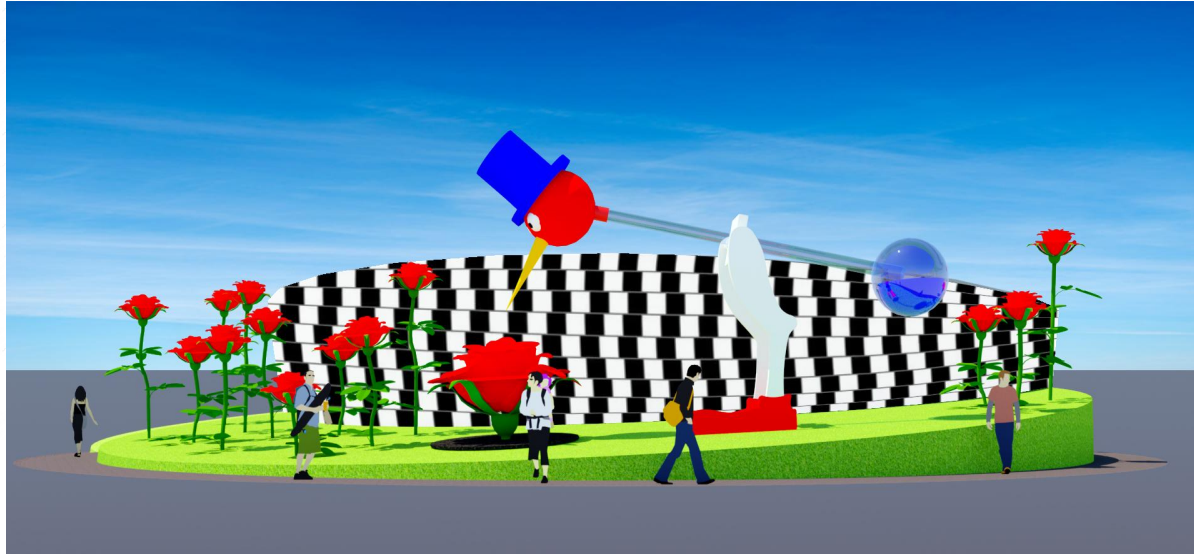


GLENARM POWER PLANT PROPOSAL //

DIPPING BIRD ROSE PAVILION

GLASS // RESIN // WOOD // CEMENT // TILE // ASTROTURF

MARCH 2017



FRONT VIEW

This design features a 16' - 18' 'Dippy Bird' sculpture, that will dip into a rose fountain.

The parabolic wall, will be covered in an optical illusion, created from locally sourced ceramic tile.

The lawn will be astroturf, to prevent a need for extensive maintenance.

The rose garden will feature roses, painted by local artists.

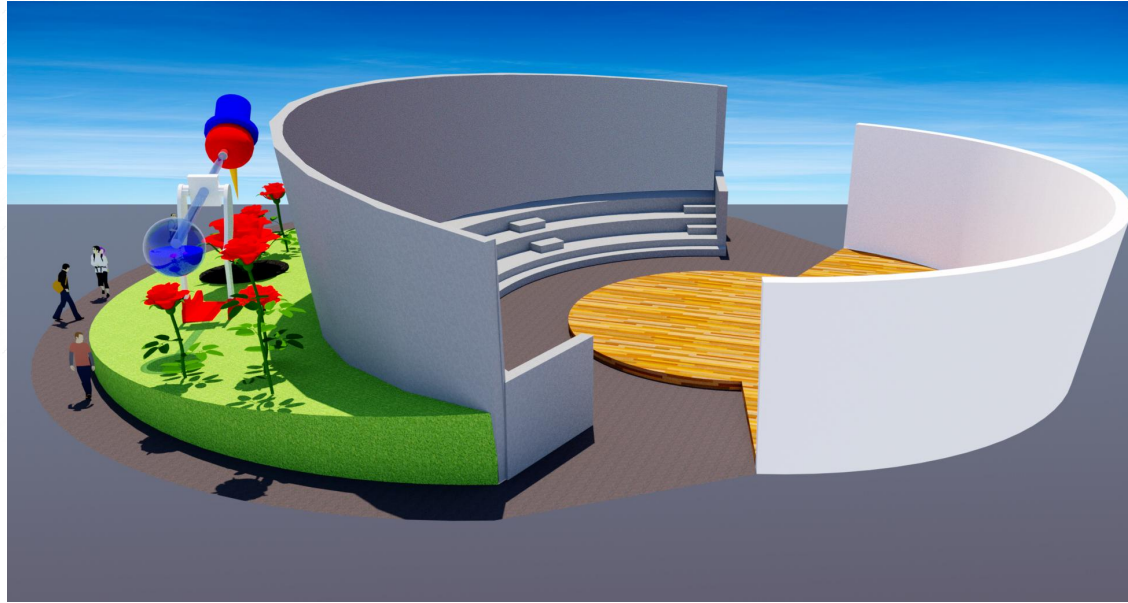
Behind the wall is an open, community theatre space.

GLENARM POWER PLANT PROPOSAL //

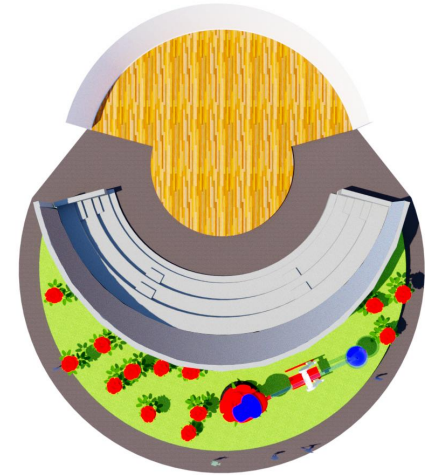
DIPPING BIRD ROSE PAVILION

GLASS // RESIN // WOOD // CEMENT // TILE

MARCH 2017



SIDE VIEW



AERIAL VIEW

CONTACT // QUESTIONS >

INFO @ PRETTYINPLASTIC.COM

JULIE @ PRETTYINPLASTIC.COM

MISHOU @ PRETTYINPLASTIC.COM

323.306.3085